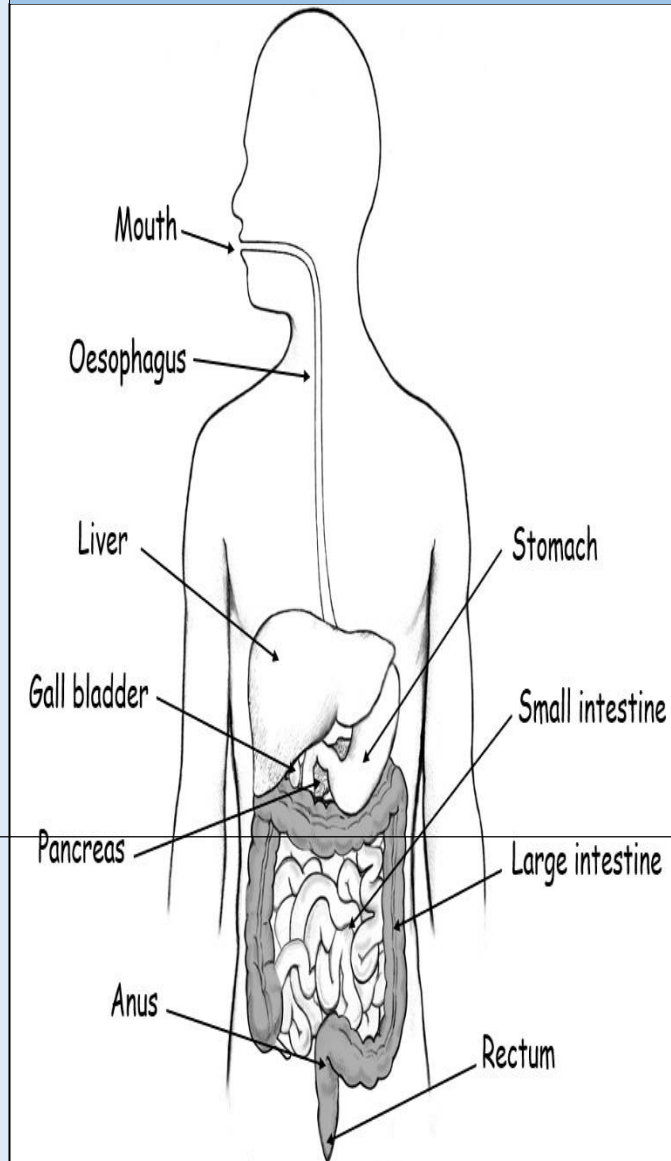


Year 4 Science Pentecost Term: Biology - Teeth & Eating

The Process of Digestion

Mouth	Food enters the mouth and digestion begins.
Teeth	Teeth tear, cut and grind food.
Saliva	Saliva mixes with food to moisten food and begin to break it down.
Oesophagus	Food is transported downwards through this tube to the stomach.
Stomach	The stomach holds food and uses acids and enzymes to break it down.
Small intestine	The small intestine breaks down food from the stomach and releases nutrients into the body.
Large intestine	The large intestine absorbs water from digested food and forms faeces.
Rectum	This is where faeces are stored until a person is ready to go to the toilet.
Anus	Faeces leave the body through the anus and digestion is complete.

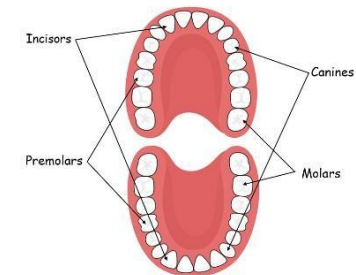
The Parts of the Digestive System



Key Learning

- Describe the simple functions of the basic parts of the digestive system in humans.
- Identify the different types of teeth in humans and their simple functions.

Types of Teeth



Functions of Teeth

Incisors	Biting and cutting food.
Canines	Tearing and ripping food.
Premolars	Holding and crushing food.
Molars	Grinding food.
Wisdom teeth	Does not have a function.